

DEPARTMENT OF THE ARMY TECHNICAL MANUAL

Organizational Maintenance Repair Parts and Special Tools List CAMERA SET, STILL PICTURE KS-19A3

Headquarters, Department of the Army, Washington, D.C.
17 August 1972

(Current as of 21 March 1971)

	Paragraph	Page
Section I. INTRODUCTION		
scope	1-1	1-1
General	1-2	1-1
Explanation of columns	1-3	1-1
Special information	1-4	1-2
Location of repair parts	1-5	1-2
Federal supply code for Manufacturers	1-6	1-2
Recommendations for maintenance publications improvements	1-7	1-2
II. REPAIR PARTS FOR ORGANIZATIONAL MAINTENANCE	2-1	2-1
III. SPECIAL TOOLS, TEST AND SUPPORT EQUIPMENT FOR ORGANIZATIONAL M A I N T E N A N C E	3-1	3-1
IV. INDEX-FEDERAL STOCK NUMBER AND REFERENCE NUMBER CROSS REFERENCE TO FIGURE AND ITEM NUMBER OR REFERENCE DESIGNATION	4-1	4-1
V. INDEX-REFERENCE DESIGNATION CROSS REFERENCE TO PAGE NUMBER	5-1	5-1

SECTION I.

INTRODUCTION

1-1. Scope

This manual lists repair parts, special tools, test and support equipment required for the performance of organizational maintenance of the KS-19A3.

1-2. General

This Repair Parts and Special Tools List is divided into the following sections:

a. Repair Parts for Organizational Maintenance - Section II. A list of repair parts authorized for the performance of maintenance at the organizational level.

b. Special Tools, Test and Support Equipment for Organizational Maintenance-Section III. A list of special tools, test and support equipment authorized for the performance of maintenance at the organizational level.

c. Index-Federal Stock Number Cross Reference to Figure and Item Number or Reference Designation-section IV. A list of Federal stock numbers in ascending numerical sequence, followed by a list of reference numbers in ascending alphanumeric sequence, cross-referenced to the illustration figure number and reference designation.

d. Index-Reference Designation Cross-Reference to Page Number-Section V. A list of reference designations cross-referenced to page numbers.

1-3. Explanation of Columns

The following provides an explanation of columns in the tabular lists:

a. Source Maintenance, and Recoverability Co&s (SMR), Column 1.

(1) Source code indicates the selection status and source for the listed item. Source codes are:

Code	Explanation
P -	Repair parts which are stocked in or supplied from the GSA/DSA, or Army supply system and authorized for use at indicated maintenance categories.
M -	Repair parts which are not procured or stocked, but are to be manufactured at indicated maintenance levels.
x -	Parts and assemblies which are not procured or stocked and the mortality of which normally below that of the applicable end item or component. The nature or such part or assembly should be result in retirement of the end item from the supply system.
X1 -	Repair parts which are not procedure or stocked. The requirement for such items.

Code	Explanation
	will be filled by use of the next higher assembly or component.
x 2 -	Repair parts which are not stocked. The indicated maintenance category requiring such repair parts will attempt to obtain same through cannibalization. Where such repair parts are not obtainable through cannibalization, requirements will be requisitioned, with accompanying justification, through normal supply channels.
G-	Major assemblies that are procured with PEMA funds for initial issue only as exchange assemblies at DSU and GSU level. These assemblies will not be stocked above DS and GS level or returned to depot supply level.
	(2) Maintenance code indicates the lowest category of maintenance authorized to install the listed item. The maintenance level code is:

Explanation

Organizational maintenance

(3) Recoverability code indicates whether un-serviceable items should be returned for recovery or salvage. Items not coded are expendable. Recoverability code is:

R - Repair parts and assemblies that are economically repairable at DSU and GSU activities and are normally furnished by supply on an exchange basis.

b. Federal Stock Number , Column 2. This column indicates the Federal stock number assigned to the item and will be used for requisitioning

c. Description, Column 8. This column indicates the Federal item name and any additional description of the item required. A part number of other reference number is followed by the applicable five digit federal supply code for manufacturers in parentheses.

d. Unit of Measure (U/M), Column 4. A two-character alphabetic abbreviation indicating the amount or quantity of the item upon which the allowances are based, e.g., ft, ea, pr, etc.

e. Quantity Incorporated in Unit, Column 5. This column indicates the quantity of the item used in the assembly group.

f. Allowances-15-Day Organizational Maintenance, Column 6 of Sections II and III. Items authorized for requisition as required are identified by an asterick in the allowance column.

g. Illustrations. **Column 7.** This column is divided as follows:

(1) **Figure number, column 7a.** Indicates the figure number of the illustration in which the item is shown.

(2) **Item number or reference designation, column 7b.** Indicates the reference designation used to identify the item in the illustration.

1-4. Special Information

a. The Following publications pertain to the KS-19A3:

- TM 11-6720-216-10 Operator's Manual: Camera Set, Still Picture KS-19A3.
- TM 11-6720-216-20 Organizational Maintenance Manual: Camera Set. Still Picture KS-19A3.

b. Parts which require manufacture or assembly at a category higher than that authorized for installation will indicate in the source column the higher category, e.g., MH-O.

c. Dry batteries shown are used with the equipment but are not considered part of the equipment. They will not be preshipped automatically but are to be requisitioned in quantities necessary for the particular organization in accordance with SB 11-6.

1-5. Location of Repair Parts

a. This manual contains two cross reference indexes (sec IV and V) to be used to locate a repair part when either the Federal stock number, reference number (manufacturer's part number), or reference designation is known. The first column in each index is prepared in numerical or alphanumeric sequence in ascending order. Where a Federal stock number is not listed, refer to the reference number (manufacturer's part number) immediately following the federal stock number.

b. When the federal stock number or reference number is known. follow the procedures given in (1) and (2) below.

(1) Refer to the index of Federal stock numbers (sec IV) and locate the Federal stock number. The FSN is cross-referenced to the applicable figure and reference designation.

(2) when the reference designation is determined, refer to the reference designation index section v.

The reference designation are listed in alpha-numeric ascending order are cross referenced to the page number on which they appear in the repair part list (sec II). Refer to page number noted in the index and locate the reference designation in the repair parts lists (col 7).

when the reference designation is known, follow the procedures given in b(2) above.

d. When neither the FSN, reference number, nor reference designation is known, identify the part in the illustration and follow directions given in c above; or scrutinize column 3 of the repair parts list (sec II).

1-6. Federal Supply Code for Manufacturers

<i>Codes</i>	<i>Manufacturer</i>
20321	Wollensak Optical Co.
33173	General Electric Co. Tube Dept.
47904	Polaroid Corporation
63515	Walker Co. Incorporated
75915	Littlefuse Incorporated
81349	Military Specifications
88044	Aeronautical Standards
96906	Military Standards
99176	Mast Development Company

1-7. Recommendations for Maintenance Publication Improvements

Reporting of errors, omissions, and recommendations for improving this publication by the individual user is encouraged. Reports should be submitted on DA Form 2028 (Recommended Changes to Publications) and forwarded direct to Commanding General, US Army Electronics Command, ATTN. AMSEL-MA-S, Fort Monmouth, NJ 07703.

SECTION II REPAIR PARTS FOR ORGANIZATIONAL MAINTENANCE

(1) S&P CODE	(2) FEDERAL STOCK NUMBER	(3) DESCRIPTION Reference Number & Mfr Code	(4) UNIT OF MEAS	(5) QTY INC IN UNIT	(6) 15-DAY ORGANIZATIONAL MAINTENANCE ALLOW				(7) ILLUSTRATIONS	
					(a) 1-5	(b) 6-20	(c) 21-50	(d) 51-100	(a) FIG NO.	(b) ITEM NO. OR REFERENCE DESIGNATION
		CAMERA SET, STILL PICTURE KS-19A3 Polaroid-land Camera Body w/F3.5 lens and shutter, stereo attachment timer, and tripod, w/ Electronic Flash Unit THIS IS NONEXPENABLE								
P-O-R	6720-973-2646	CAMERA, STILL, PICTURE 001-156 (99176)	EA	1	*	*	*	*	2-3	MP2.5
ME-O		DET ENT 001-041 (99176)	EA	1					2-1	MP3
EX-O		SHAFT, RETAINING 001-013 (99176)	EA	1					2-1	MP4
P-O	5340-584-6620	RING, RETAINING MS16632-1037 (96906)	EA	2	*	*	*	*	2-2	MP5
EX-O		PLATE, IDENTIFICATION 001-097 (99176)	EA	1						MP6
P-O	6760-981-8683	CAP, LENS 001-300 (99176)	EA	1	*	*	*	*	2-1	MP19
P-O	5305-988-0910	SCREW, MACHINE 001-199 (99176)	EA	2	*	*	*	*	2-2	MP22
P-O	5305-988-0910	SCREW, MACHINE 001-199 (99176)	EA	3	*	*	*	*	2-2	MP25.1
P-O	5305-988-0910	SCREW, MACHINE 001-199 (99176)	EA	2	*	*	*	*	2-2	MP31
P-O	6760-543-4191	CABLE RELEASE, PHOTOGRAPHIC SHUTTER A10529 (20321)	EA	1	*	*	*	*	2-7	MP71
EX-O		GROOV-PIN 433212 (99176)	EA	1					2-1	MP72
P-O	6720-981-8690	STEREO SCOPIIC ATTACHMENT 001-095 (99176)	EA	1	*	*	*	*	2-1	MP73
EX-O		HOUSING, STEREO ATTACHMENT 001-090 (99176)	EA	1						MP74
EX-O		MIRROR, GLASS, INNER 001-093 (99176)	EA	2						MP75
EX-O		MIRROR, GLASS, OUTED 001-094 (99176)	EA	2						MP76
EX-O		PLATE, FRONT 001-092 (99176)	EA	1						MP77
P-O		K N O B 001-128 (99176)	EA	1	*	*	*	*	2-1	MP78
P-O	6760-981-8689	TUBE LATCH ASSEMBLY 001-087 (99176)	EA	3	*	*	*	*	2-1	MP80
EX-O		SCREW, MACHINE MS35233-14 (96906)	EA	6					2-1	MP81
EX-O		LATCH BODY 001-031 (99176)	EA	1					2-1	MP82
EX-O		PIN, SPRING MS171500 (96906)	EA	1						MP83
P-O	6720-981-8687	LATCH, DOUBLE EXPOSURE 001-012 (99176)	EA	1	*	*	*	*	2-1	MP84
EX-O		WASHER, LOCK MS35335-15 (96906)	EA	2					2-1	MP85
EX-O		SCREW, MACHINE MS35233-14 (96906)	EA	1					2-1	MP86
G-O		TRIPOD, PHOTOGRAPHIC 001-115 (99176)	EA	1					2-4	MP87

SECTION II REPAIR PARTS FOR ORGANIZATIONAL MAINTENANCE (CONTINUED)

(1) S&P CODE	(2) FEDERAL STOCK NUMBER	(3) DESCRIPTION Reference Number & Mfr Code	(4) UNIT OF MEAS	(5) QTY INC IN UNIT	(6) 15-DAY ORGANIZATIONAL MAINTENANCE ALW				(7) ILLUSTRATIONS	
					(a) 1-5	(b) 6-20	(c) 21-50	(d) 51-100	(a) FIG NO.	(b) ITEM NO. OR REFERENCE DESIGNATION
X2-0		TUBE, OUTER 001-109 (99176)	EA	1						HP88
X2-0		PLUG, RINGS 001-101 (99176)	EA	1						HP89
X2-0		SCREW, SELF-TAPPING MS35235-27 (96906)	EA	3						HP90
X2-0		TUBE, INNER 001-106 (99176)	EA	1						HP91
X2-0		PLUG, HOLE 001-359 (99176)	EA	1						HP91.5
X2-0		COUNTER BALANCE ASSEMBLY 001-350 (99176)	EA	1						HP92
X2-0		YOKE AND ROD ASSEMBLY 001-354 (99176)	EA	1						HP93
X2-0		SPOOL 001-352 (99176)	EA	2						HP94
X2-0		PIN, GROOVED, HEADLESS 001-351 (99176)	EA	2						HP95
X2-0		SPRING, NEGATOR H12K36 (99176)	EA	2						HP96
X2-0		WASHER, NON-METALLIC 001-358 (99176)	EA	4						HP97
X2-0		RING, RETAINING MS16633-1025 (96906)	EA	4						HP98
X2-0		SPRING, ANCHOR 001-356 (99176)	EA	1						HP99
X2-0		NUT, HEXAGON MS35649-84 (96906)	EA	2						HP100
X2-0		WASHER, FLAT MS15795-310 (96906)	EA	1						HP101
X2-0		LINK, LEG 001-190 (99176)	EA	3						HP106
X2-0		SCREW, MACHINE MS35236-67 (96906)	EA	3						HP107
X2-0		NUT, STOP 22K1-1032 (99176)	EA	3						HP102
X2-0		LEG ASSEMBLY 001-186 (99176)	EA	3						HP103
X2-0		STUD, PLAIN 001-114 (99176)	EA	3						HP104
X2-0		NUT, STOP 22K1-420 (99176)	EA	6						HP105
X2-0		LEG TUBE ASSEMBLY, OUTER 001-375 (99176)	EA	3						HP106.1
X2-0		LEG TUBE ASSEMBLY, INNER 001-376 (99176)	EA	3						HP107.1
X2-0		SCREW, MACHINE MS35226-70 (96906)	EA	3						HP108
X2-0		STOP NUT 22K1-1032 (99176)	EA	3						HP109
X2-0		STOP, EXTENSION 001-184 (99176)	EA	1						HP110
X2-0		CLAMP 001-180 (99176)	EA	1						HP111

SECTION II REPAIR PARTS FOR ORGANIZATIONAL MAINTENANCE (CONTINUED)

(1) SRR CODE	(2) FEDERAL STOCK NUMBER	(3) DESCRIPTION Reference Number & Mfr Code	(4) UNIT OF MEAS	(5) QTY INC IN UNIT	(6) 15-DAY ORGANIZATIONAL MAINTENANCE ALW				(7) ILLUSTRATIONS	
					(a) 1-5	(b) 6-20	(c) 21-50	(d) 51-100	(a) FIG NO.	(b) ITEM NO. OR REFERENCE DESIGNATION
X2-0		KNOB ASSEMBLY 001-187 (99176)	EA	1						MP112
X2-0		WASHER, LOCK MS13793-210 (96906)	EA	1						MP113
P-0	5340-984-6179	BUMPER, RUBBER 001-183 (99176)	EA	1	*	*	*	*		MP114
X2-0		HINGE, LEGS 001-117 (99176)	EA	1						MP115
X2-0		LINER, HINGE 001-112 (99176)	EA	1						MP116
X2-0		KNOB 001-82 (99176)	EA	1						MP117
X2-0		KNOB 001-193 (99176)	EA	1						MP118
X2-0		WASHER, FLAT AN960-C516 (88044)	EA	2						MP119
X2-0		CLAMP, HEIGHT ADJUST 001-103 (99176)	EA	1						MP120
X2-0		LINER, CLAMP 001-111 (99176)	EA	1						MP121
X2-0		SCREW, MACHINE, MS-35251-90 (96906)	EA	1						MP122
C-0	6760-983-3978	TITLEBOARD TUBE AND HOLDER A S S E M B L Y 001-004 (99176)	EA	1					2-3	MP124
X2-0		TUBE, TITLEBOARD 001-029 (99176)	EA	1						MP125
X2-0		CONTRACTOR ASSEMBLY 001-018 (99176)	EA	1						MP126
X2-0	5305-763-6962	SCREW, MACHINE MS35249-34 (96906)	EA	1						MP127
X2-0		HOLDER ASSEMBLY, TITLEBOARD 001-065 (99176)	EA	1						MP128
X2-0		BODY, TITLEBOARD HOLDER 001-067 (99176)	EA	1						MP129
X2-0		HOOK, TITLEBOARD 001-066 (99176)	EA	1						MP130
X2-0		SPRING, HELICAL, COMPRESSION 001-068 (99176)	EA	1						MP131
X2-0		BUTTON, TITLEBOARD 001-069 (99176)	EA	1						MP132
X2-0		SCREW, MACHINE MS35266-63 (96906)	EA	1						MP133
X2-0	5310-934-9751	NUT, PLAIN, HEXAGON MS35650-102 (96906)	EA	1						MP134
P-0	6760-983-3980	TITLEBOARD, SET, PHOTOGRAPHIC 001-140 (99176)	EA	1	*	*	*	*		MP135
P-0	6760-981-8692	CASE WITH TITLEBOARD CHARACTERSET 001-141 (99176)	EA	2	*	*	*	*		MP136
X2-0		CASE, TITLEBOARD CHARACTER SET 001-142 (99176)	EA	1						MP137
X2-0		LETTERS AND NUMERALS, SIGN 001-143 (99176)	EA	1						MP138
X2-0		TITLEBOARD 001-144 (99176)	EA	6						MP139

SECTION II REPAIR PARTS FOR ORGANIZATIONAL MAINTENANCE (CONTINUED)

(1) USE CODE	(2) FEDERAL STOCK NUMBER	(3) DESCRIPTION Reference Number & Mfr Code	(4) UNIT OF MEAS IN UNIT	(5) QTY REQ IN UNIT	(6) 16-DAY ORGANIZATIONAL MAINTENANCE ALW				(7) ILLUSTRATIONS	
					(a) 1-5	(b) 6-20	(c) 21-40	(d) 41-100	(a) FIG NO.	(b) ITEM NO. OR REFERENCE ILLUSTRATION
E-0		SPECIALIST ASSEMBLY, LEFT HAND	EA	1					2-5	MP140
E-0		HOUSING, LIGHT UNIT DD1130 (99176)	EA	1					2-5	MP141
E-0		GLOVE, LIGHT UNIT DD1131 (99176)	EA	1					2-5	MP142
E-0		SETSCREW MS51021-22 (96906)	EA	5					2-5	MP143
E-0		ILMINATOR LIGHT DD190 (99176)	EA	1					2-5	MP144
E-0		SETSCREW MS51021-21 (96906)	EA	2					2-5	MP145
P-0	6240-774-6116	ELECTRON TUBE FT-120 (33173)	EA	1	*	*	*	*	2-5	V1
E-0		SOCKET, ELECTRICAL TUBE DF778A (99176)	EA	1					2-5	XV1
E-0		DISC, INSULATING DF661 (99176)	EA	1					2-5	B5
E-0		CAP, SLEEVE DF1132 (99176)	EA	1					2-5	MP146
E-0		SCREW, MACHINE MS35233-13 (96906)	EA	2					2-5	MP147
E-0		WASHER, LOCK MS35333-36 (96906)	EA	2					2-5	MP148
E-0		BOX CONNECTOR, ELECTRICAL DL90-75L (99176)	EA	1					2-5	MP149
E-0		NUT, COUPLING 10588 (99176)	EA	1						MP150
E-0		BONDNUT, ELECTRICAL CONDUIT 10569 (99176)	EA	1						MP151
E-0		STRAIN RELIEF 6 (63515)	EA	1					2-5	MP152
E-0		CABLE ASSEMBLY, SPECIAL PURPOSE ELECTRICAL 001-152 (99176)	EA	1					2-5	V1
E-0	5935-201-7968	CONNECTOR, PLUG, ELECTRICAL MS3106A-16-9P (96906)	EA	1					2-5	WCP1
E-0	5935-688-4026	ADAPTER, CABLE TO CONNECTOR AN3057-8 (88044)	EA	1					2-5	WICP1
E-0		CABLE, SPECIAL PURPOSE, ELECTRICAL 001-154 (99176)	EA	1					2-5	MP153
E-0		GROMMET, RUBBER 230 (99176)	EA	1					2-5	MP154
E-0		TUBE ASSEMBLY, LEFT HAND 001-124 (99176)	EA	1					2-5	MP155
E-0		TUBE, SPEEDLIGHT, LEFT HAND 001-119 (99176)	EA	1						MP156
E-0		CONTRACTOR ASSEMBLY 001-018 (99176)	EA	1						MP156.1
E-0	5305-763-6962	SCREW, MACHINE MS35249-34 (96906)	EA	1						MP156.2
E-0		SPEEDLIGHT ASSEMBLY, RIGHT HAND	EA	1						MP157
E-0		HOUSING, LIGHT UNIT DK1130 (99176)	EA	1					2-6	MP157.1
E-0		SLEEVE, LIGHT UNIT DK1131 (99176)	EA	1					2-6	MP157.2
E-0		SETSCREW MS51021-22 (96906)	EA	5					2-6	MP157.3

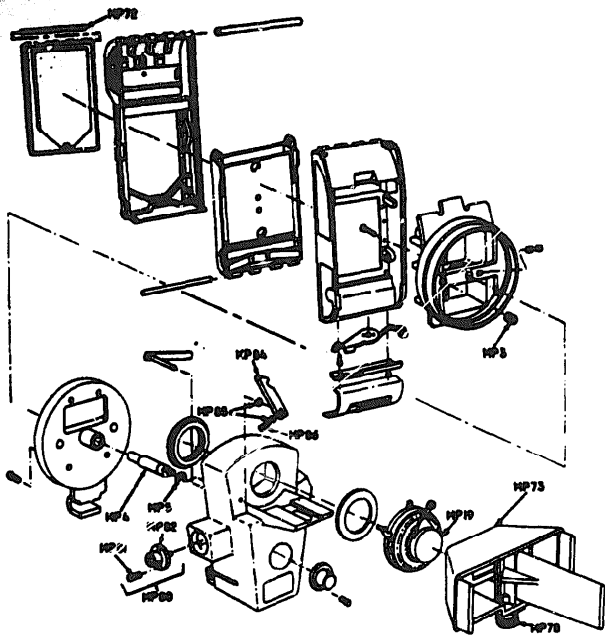
SECTION II REPAIR PARTS FOR ORGANIZATIONAL MAINTENANCE (CONTINUED)

(1) SHR CODE	(2) FEDERAL STOCK NUMBER	(3) DESCRIPTION Reference Number & Mfr Code	(4) UNIT OF MEAS	(5) QTY INC IN UNIT	(6) 15-DAY ORGANIZATIONAL MAINTENANCE ALLOW				(7) ILLUSTRATIONS	
					(a) 1-5	(b) 6-20	(c) 21-50	(d) 51-100	(e) FIG NO.	(f) ITEM NO. OR REFERENCE DESIGNATION
X2-0		REFLECTOR, LIGHT DD190 (99176)	EA	1					2-6	MP157.4
X2-0		SET SCREW MS51021-21 (96906)	EA	2					2-6	MP157.5
P-0	6240-774-6116	ELECTRON TUBE FT-120 (33173)	EA	1	*	*	*	*	2-6	V2
X2-0		SOCKET, ELECTRON TUBE DE778A (99176)	EA	1					2-6	XV2
X2-0		DISC, INSULATING DE661 (99176)	EA	1					2-6	MP157.8
X2-0		CAP, SLEEVE DE1132 (99176)	EA	1					2-6	MP157.9
X2-0		SCREW, MACHINE MS35233-13 (96906)	EA	2					2-6	MP157.10
X2-0		WASHER, LOCK MS35333-36 (96906)	EA	2					2-6	MP157.11
X2-0		BOX, CONNECTOR ELECTRICAL NL90-75L (99176)	EA	1					2-6	MP157.12
X2-0		NUT, COUPLING, 10583 (99176)	EA	1						MP157.13
X2-0		BONDNUT, ELECTRICAL CONDUIT 10589 (99176)	EA	1						MP157.14
X2-0		STRAIN RELIEF 6 (6 3 5 1 5)	EA	1					2-6	MP157.15
X2-0		CABLE ASSEMBLY, SPECIAL PURPOSE, ELECTRICAL 01-153 (99176)	EA	1					2-6	W2
X1-0		CONNECTOR, PLUG, ELECTRICAL MS3106A-16-9P (96906)	EA	1					2-6	W2P2
X1-0		ADAPTER, CABLE TO CONNECTOR AN3057-8 (88044)	EA	1					2-6	W2CP1
X1-0		CABLE SPECIAL PURPOSE 001-154 (99176)	EA	1					2-6	MP157.19
X2-0		GROMMET, RUBBER 2 3 0 (9 9 1 7 6)	EA	1					2-6	MP157.20
X2-0		TUBE ASSEMBLY, RIGHT HAND 001-125 (99176)	EA	1					2-6	MP158
X2-0		TUBE, SPEEDLIGHT, RIGHT HAND 001-120 (99176)	EA	1						MP159
X2-0		CONTRACTOR ASSEMBLY 001-018 (99176)	EA	1						MP159.1
X2-0		SCREW, MACHINE, FLAT, HEAD MS35267-32 (96906)	EA	1						MP159.2
P-0	6135-164-8758	BATTERY, DRY BA-420/U (81349)	EA	4	*	*	*	*	2-3	BT1
X-0		BATTERY CASE AND CABLE ASSEMBLY	EA	1					2-3	MP160
X2-0		BATTERY CASE ASSEMBLY 0 0 1 - 1 4 6 (9 9 1 7 6)	EA	1					2-3	MP161
X2-0		BATTERY BOX DC359 (99176)	EA	1						MP162
X2-0		PAD, RUBBER DE1133 (99176)	EA	2						MP163
X2-0		PLATE, INSTRUCTION 001-135 (99176)	EA	1						MP164
X2-0		RIVET, 3/32 X 3/16 R4008 (99176)	EA	4						MP165

SECTION II

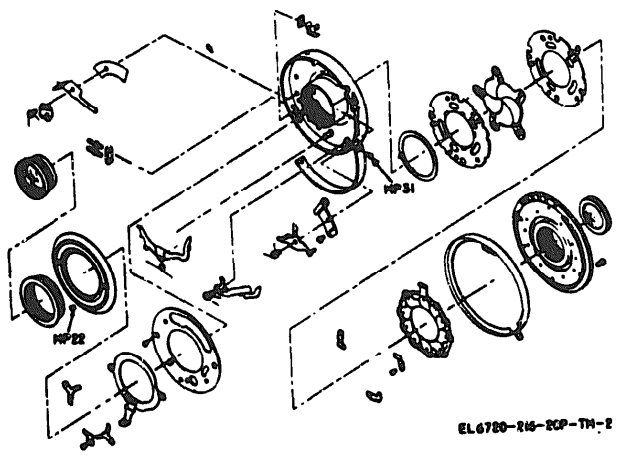
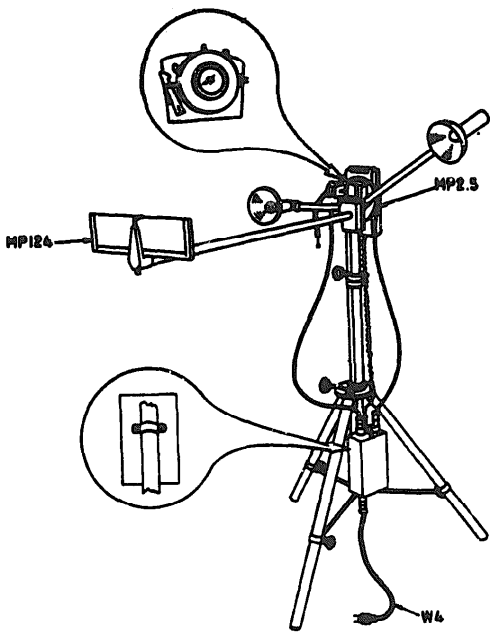
REPAIR PARTS FOR ORGANIZATIONAL MAINTENANCE (CONTINUED)

(1) SNR CODE	(2) FEDERAL STOCK NUMBER	(3) DESCRIPTION Reference Number & Mfr Code	(4) UNIT OF MEAS	(5) QTY INC IN UNIT	(6) 15-DAY ORGANIZATIONAL MAINTENANCE ALLOW				(7) ILLUSTRATIONS	
					(a) 1-5	(b) 6-20	(c) 21-50	(d) 51-100	(a) FIG NO.	(b) ITEM NO. OR REFERENCE DESIGNATION
P-0	6720-984-0962	CABLE ASSEMBLY, SPECIAL PURPOSE, ELECTRICAL 001-147 (99175)	EA	1	*	*	*	*	2-3	V3
X2-0		CONNECTOR, PLUG ELECTRICAL 9706-3 (99176)	EA	1						V3P2
X2-0		CONNECTOR, PLUG ELECTRICAL MS3106A-18-118 (96906)	EA	1						V3P3
X2-0		ADAPTER, CABLE TO CONNECTOR AN3057-1C (99044)	EA	1						V3CP2
X2-0		CABLE, SPECIAL PURPOSE 001-148 (99176)	EA	1						V3R2
X2-0		WIRE, ELECTRICAL 001-149 (99176)	EA	3						V3W3
X-0		POWER SUPPLY	EA	1					2-8	PS1
X2-0	5935-852-9611	CONNECTOR, RECEPTABLE ELECTRICAL MS31021-18-11P (96906)	EA	1					2-8	PE1J1
X2-0		RIVET, 1/8 X 1/4 R4012 (99176)	EA	4						PE1MP171
P-0	5920-615-3909	FUSEHOLDER 342012 (75915)	EA	1	*	*	*	*	2-8	PE1XF1
P-0	5920-142-7376	FUSE, CARTRIDGE MDL (75915)	EA	1	*	*	*	*	2-8	PE1F1
P-0	5930-655-1508	SWITCH, TOGGLE MS25100-23 (96906)	EA	1	*	*	*	*	2-8	PE1S1
X1-0		CLAMP, SCREW AND CHAIN ASSEMBLY AE 90 (99176)	EA	1						PE1MP183
X1-0		THUMBSCREW DC1129 (99176)	EA	2						PE1MP184
X1-0		BEAD CHAIN #6, 2# LONG W/TYP 001-160 (99176)	EA	1						PE1MP185
X1-0		RIVET, 1/8 X 3/16 R-4012 (99176)	EA	2						PE1MP186
P-0	6720-986-0342	CABLE ASSEMBLY, SPECIAL PURPOSE, ELECTRICAL 001-137 (99176)	EA	1	*	*	*	*	2-3	W4
X1-0		CABLE, SPECIAL PURPOSE 001-131 (99176)	EA	1						W4W5
X1-0		CONNECTOR, PLUG, ELECTRICAL MS3106A-12S-3P (96906)	EA	1						W4P4
X1-0		ADAPTER, CABLE TO CONNECTOR AN3057-4 (88044)	EA	1						W4CP3
P-0	6720-986-8615	CABLE ASSEMBLY, POWER ELECTRICAL 001-138 (99176)	EA	1	*	*	*	*		W6
X1-0		CABLE, SPECIAL PURPOSE ELECTRICAL 001-139 (99176)	EA	1						W6W7
P-0	5935-636-7145	CONNECTOR, PLUG, ELECTRICAL MS91185-1 (96906)	EA	1	*	*	*	*		W6P4
P-0		CONNECTOR, PLUG, ELECTRICAL MS3106A-18-118 (96906)	EA	1	*	*	*	*		W6P5
P-0		ADAPTER, CABLE TO CONNECTOR AN3057-10 (88044)	EA	1	*	*	*	*		W6CP3
0-0		CARRYING CASE 001-016 (99176)	EA	1	*	*	*	*		MP187
P-0	6720-650-6542	BACK DOOR ASSEMBLY D82383 (47904)	EA	1	*	*	*	*	2-7	A18



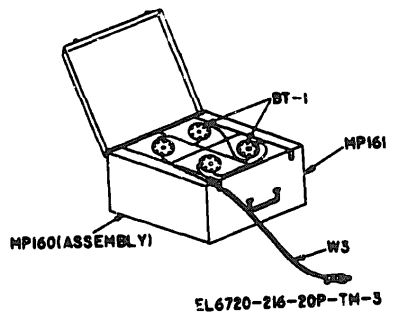
EL6720-216-20P-TM-1

Figure 2-1. Camera assembly, exploded view.



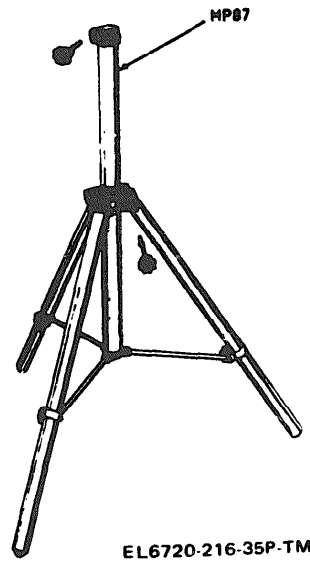
EL6720-216-20P-TM-2

Figure 2-2. Lens and shutter assembly



EL6720-216-20P-TM-3

Figure 2-3. Camera set.



EL6720-216-35P-TM-4

Figure 2-4. Tripod

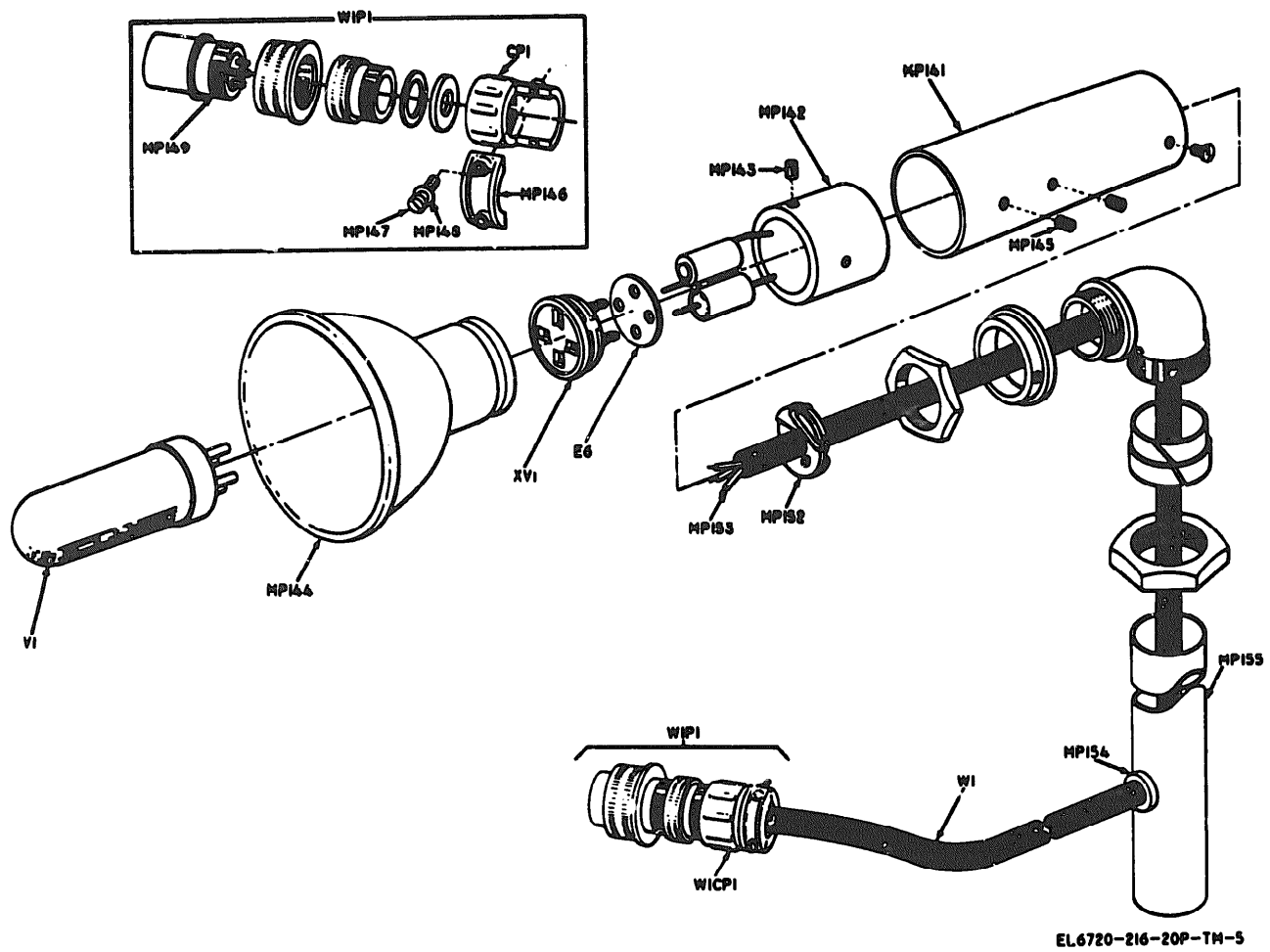


Figure 2-5. Lightarm assembly, left side.

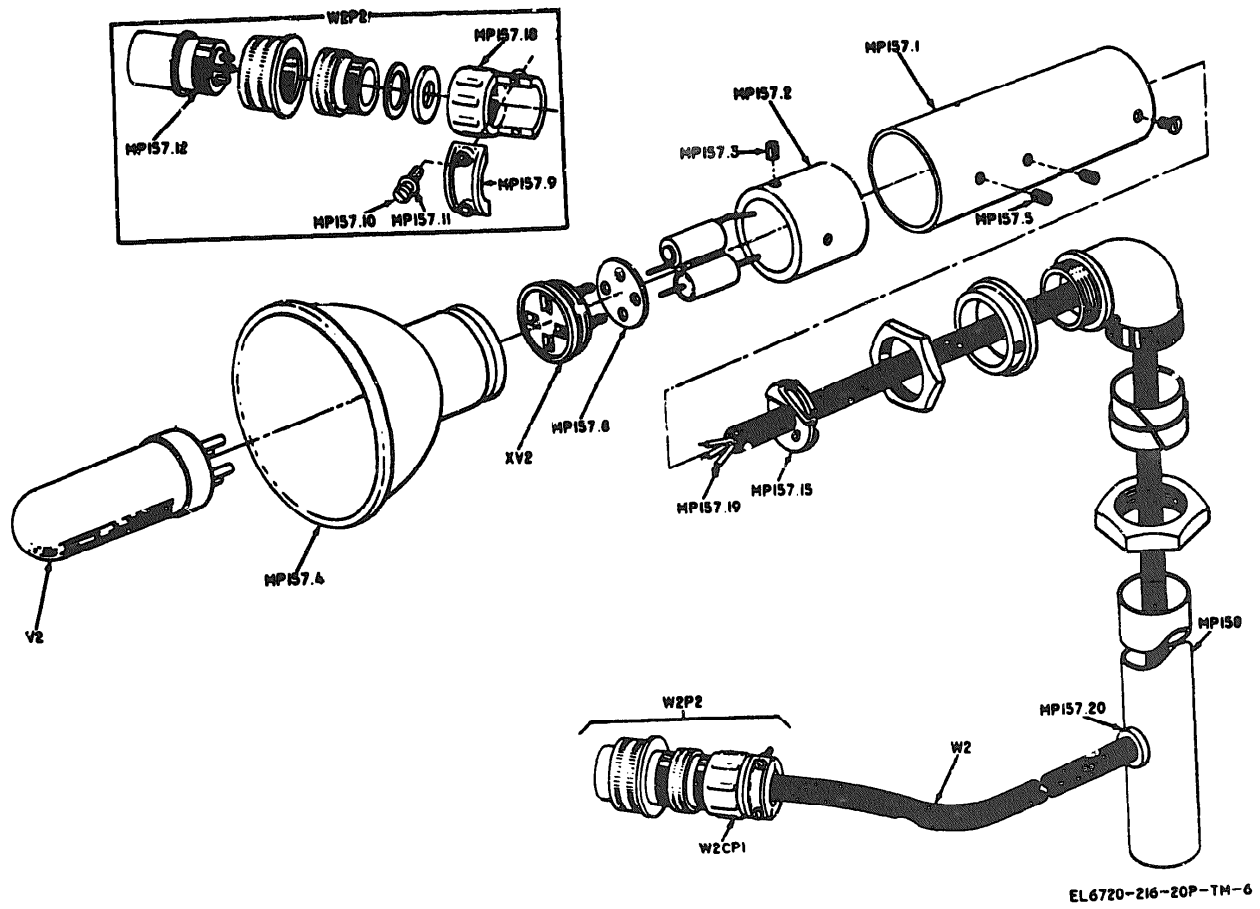
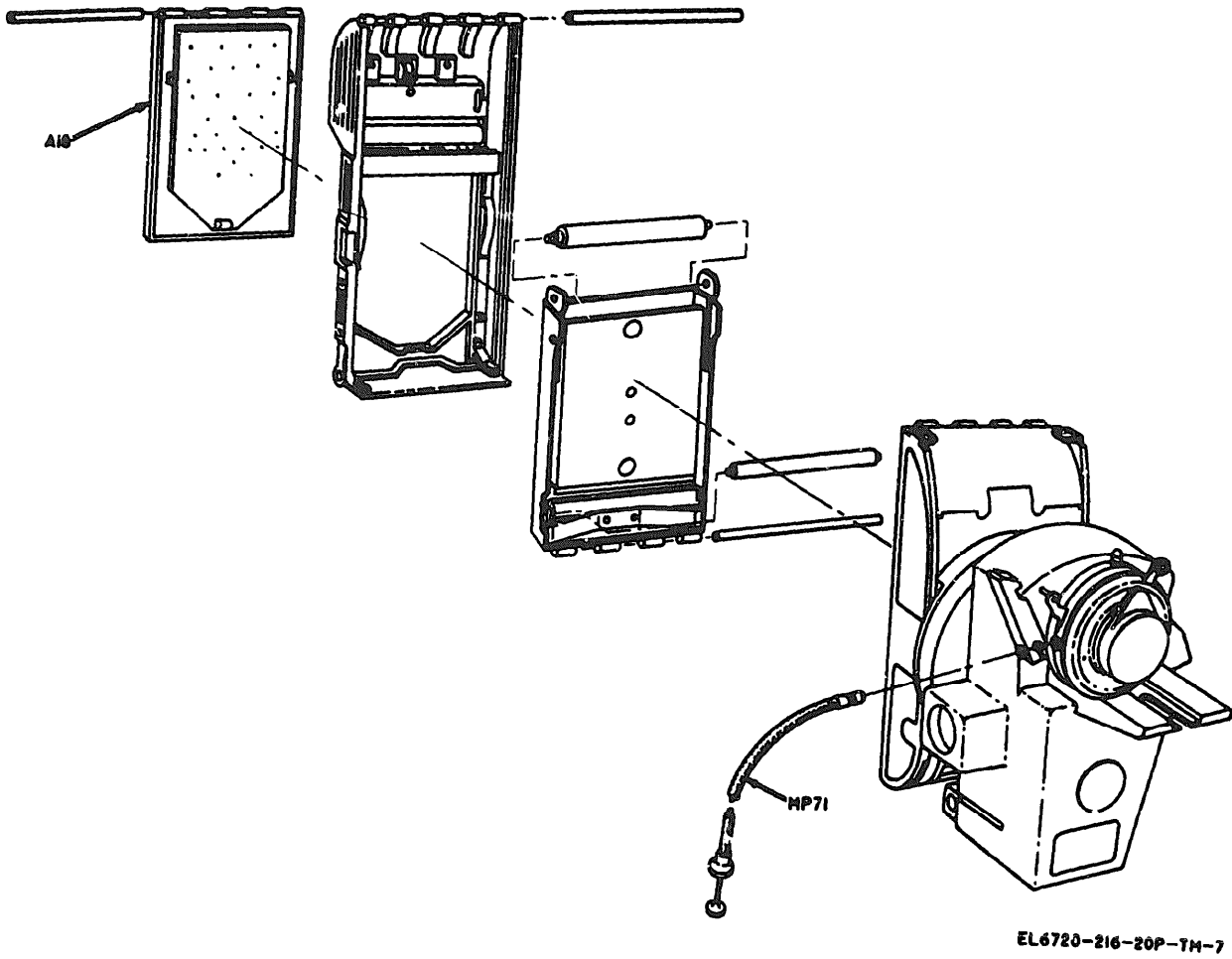


Figure 2-6. Lightarm assembly, right side



EL6720-216-20P-TM-7

Figure 2-7. Camera assembly, partial.

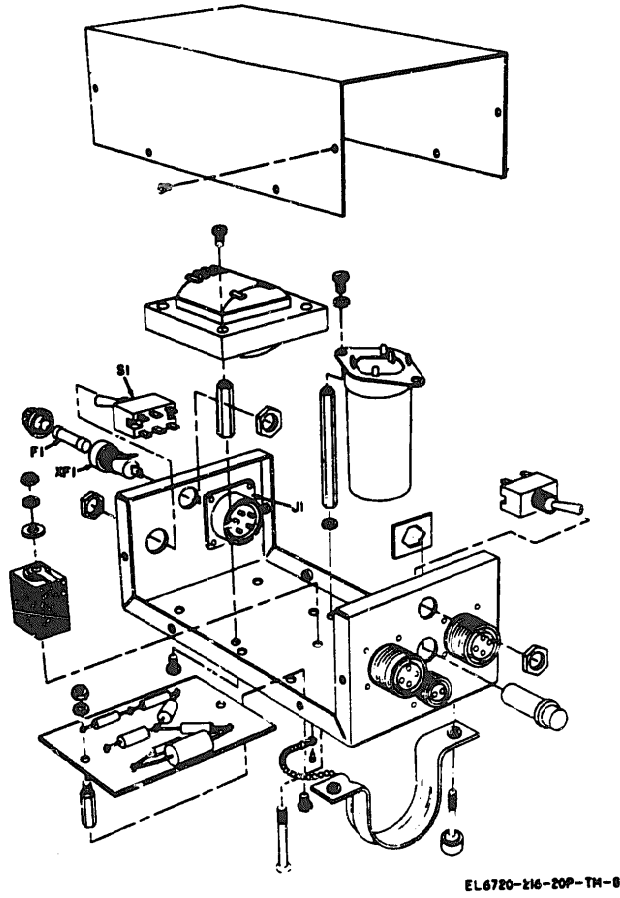


Figure 2-8. Power supply (PS1).

SECTION III SPECIAL TOOLS, TEST & SUPPORT EQUIPMENT FOR ORGANIZATIONAL MAINTENANCE

(1) SR CODE	(2) FEDERAL STOCK NUMBER	(3) DESCRIPTION Reference Number & Mfr Code	(4) UNIT OF MEAS	(5) QTY INC IN UNIT	(6) 15-DAY ORGANIZATIONAL MAINTENANCE ALW				(7) ILLUSTRATIONS	
					(a) 1-5	(b) 6-20	(c) 21-50	(d) 51-100	(a) FIG NO.	(b) ITEM NO. OR REFERENCE DESIGNATION
P-0	5120-981-5044	WRENCH, SPANNER, FOR REMOVING LENS AND SHUTTER ASSEMBLY 00-164 (39176)	EA	1	*	*	*	*		MP70

**SECTION IV INDEX-FEDERAL STOCK NUMBER AND REFERENCE NUMBER CROSS REFERENCE
TO FIGURE AND ITEM NUMBER OR REFERENCE DESIGNATION**

FEDERAL STOCK NUMBER	FIGURE NUMBER	ITEM NUMBER OR REF. DESIGNATION	FEDERAL STOCK NUMBER	FIGURE NUMBER	ITEM NUMBER OR REF. DESIGNATION
6120-98105044		MP70		MFG. CODE	REFERENCE DESIGNATION
6305-763-6962		MP127	<u>REFERENCE NO.</u>		
6305-763-6962		MP156.2	AN3057-10	88044	W3CP2
6305-988-0910	2-2	MP22	AN3057-10	88044	W6CP3
6305-988-0910	2-2	MP27.1	AN3057-4	88044	W4CP3
6305-988-0910	2-2	MP31	AN3057-8	88044	2-5 W1CP1
6310-934-9751		MP134	AN3057-8	88044	2-6 W2CP1
6340-5846620	2-1	MP5	AN960-C516	88044	MP119
6340-984-6179		MP114	A10529	20321	2-7 MP71
6920-142-7376	2-8	PS1F1	BA-420/U	81349	2-3 BT1
6920-615-3909	2-8	PS1XF1	DC359	99176	MP162
6930-655-1508	2-8	PS1S1	DD190	99176	2-5 MP144
6935-201-7968	2-5	W1P1	DD190	99176	2-6 MP157.4
6935-636-7145		W6P4	DE1129	99176	PS1MP184
6935-688-4026	2-5	W1CP1	DE1130	99176	2-5 MP141
6935-852-9611	2-8	PS1J1	DE1130	99176	2-6 MP157.1
6135-164-8758	2-3	BT1	DE1131	99176	2-5 MP142
6240-774-6116	2-5	V1	DE1131	99176	2-6 MP157.2
6240-774-6116	2-6	V2	DE1132	99176	2-5 MP146
6720-650-6542	2-7	A18	DE1132	99176	2-6 MP157.9
6720-973-2646	2-3	MP2.5	DE1133	99176	MP163
6720-981-8687	2-1	MP84	DE661	99176	2-5 E6
6720-981-8690	2-1	MP73	DE661	99176	2-6 MP157.8
6720-984-0962	2-3	W3	DE778A	99176	2-5 XV1
6720-986-0342	2-3	W4	DE778A	99176	2-6 XV2
6720-986-8615		W6	D82383	49704	2-7 A18
6760-543-4191	2-7	MP71	FT-120	33173	2-5 V1
6760-981-8683	2-1	MP19	FT-120	33173	2-6 V2
6760-981-8689	2-1	MP80	H12K36	99176	MP96
6760-981-8692		MP136	MDL	75915	2-8 PS1F1
6760-983-3978	2-3	MP124	MS-15795-210	96906	MP113
6760-983-3980		MP135	MS15795-310	96906	MP101
			MS16632-1037	96906	2-1 MP5
REFERENCE NO.	MFG. CODE	FIG. NO.	REFERENCE DESIGNATION		MP98
AE90	99176		PS1MP183	MS171500	96906
					96906
					MP83

**SECTION IV INDEX-FEDERAL STOCK NUMBER AND REFERENCE NUMBER CROSS REFERENCE
TO FIGURE AND ITEM NUMBER OR REFERENCE DESIGNATION (CONTINUED)**

FEDERAL STOCK NUMBER	FIGURE NUMBER	ITEM NUMBER OR REF. DESIGNATION	FEDERAL STOCK NUMBER	FIGURE NUMBER	ITEM NUMBER OR REF. DESIGNATION
REFERENCE NO.	MFG. CODE	FIG. DESIGNATION	REFERNECE NO.	MFG. CODE	FIG. REFERENCE DESIGNATION
MS25100-23	96906	2-8 Ps1S1	R4012	99176	PS1MP186
MS3102A-18-11P	96906	2-8 PS1JI	001-004	99176	2-3 MP124
MS3106A-12S-3P	96906	W 4 P 4	001-012	99176	2-1 MP84
MS3106A-16-9P	96906	W 1 P 1	001-013	99176	2-1 MP4
MS3106A-16-9P	96906	W 2 P 2	001-016	99176	MP187
MS3106A-18-11S	96906	W 3 P 3	001-018	99176	MP126
MS3106A-18-11S	96906	W 6 P 5	001-018	99176	MP156.1
MS35226-70	96906	MP108	001-018	99176	MP159.1
MS35333-13	96906	2-5 MP147	001-029	99176	MP125
MS35233-13	96906	2-6 MP157.10	001-031	99176	2-1 MP82
MS35233-14	96906	2-1 M P 8 1	001-041	99176	2-1 MP3
MS35233-14	96906	2-1 M P 8 6	001-065	99176	MP128
MS35235-27	96906	M P 9 0	001-066	99176	MP130
MS35236-67	96906	MP107	001-067	99176	MP129
MS35249-34	96906	MP127	001-068	99176	MP131
MS35249-34	96906	MP156.2	001-069	99176	MP132
MS35251-90	96906	MP122	001-087	99176	2-1 MP80
TMS35266-63	96906	MP133	001-090	99176	MP74
MS35267-32	96906	MP159.2	001-092	99176	MP77
MS35333-36	96906	2-5 MP148	m-093	99176	MP75
MS35333-36	96906	2-6 MP157.11	001-094	99176	MP76
MS35335-15	96906	2-1 MP85	001-095	99176	2-1 MP73
MS35649-84	96906	MP 1 0 0	001-097	99176	MP6
MS35650-102	96906	MP 1 3 4	001-101	99176	MP89
MS51021-21	96906	2-5 MP 1 4 5	001-103	99176	MP120
MS51021-21	96906	2-6 MP157.5	001-105	99176	MP88
MS51021-22	96906	2-5 MP 1 4 3	001-106	99176	MP91
MS51021-22	96906	2-6 MP157.3	001-111	99176	MP121
MS91185-1	96906	W6P4	001-112	99176	MP116
NL90-75L	99176	2-5 MP 1 4 9	001-114	99176	MP104
NL90-75L	99176	2-6 MP157.12	001-115	99176	2-4 MP87
R4008	99176	MP 1 6 5	001-117	99176	MP115
R4012	99176	PS1MP171	001-119	99176	MP156

**SECTION IV INDEX-FEDERAL STOCK NUMBER AND REFERENCE NUMBER CROSS REFERENCE
TO FIGURE AND ITEM NUMBER OR REFERENCE DESIGNATION. (CONTINUED)**

FEDERAL STOCK NUMBER			FIGURE NUMBER	ITEM NUMBER OR REF. DESIGNATION	FEDERAL STOCK NUMBER			FIGURE NUMBER	ITEM NUMBER OR REF. DESIGNATION
REFERENCE NO.	MFG. CODE	FIG. NO.		REFERENCE NO.	MFG. CODE	FIG. NO.		REFERENCE DESIGNATION	
001-120	99176			001-199	99176	2-2		MP27.1	
001-124	99176	2-s		001-199	99176	2-2		MP 3 1	
001-125	99176	2-6		001-300	99176	23		MP 1 9	
001-128	99176	2-1		001-350	99176			MP 9 2	
001-131	99176			001-351	99176			MP 9 5	
001-135	99176			001-352	99176			MP 9 4	
001-137	99176	2-3		001-354	99176			MP 9 3	
001-138	99176			001-356	99176			MP99	
001-139	99176			001-358	93176			MP97	
001-140	99176			001-359	99176			MP91.5	
001-141	99176			001-357	99176			MP106.1	
001-142	99176			001-376	99176			MP107.1	
001-143	99176			001-160	99176			PS1MP185	
001-W	99176			10583	99176			MP157.13	
001-146	99176	2-3		10588	99176			MP150	
001-147	99176	2-3		10589	99176			MP151	
001-148	99176			10569	99176			MP157.14	
001-149	99176			22K1-1032	99176			MP102	
001-152	99176	2-5		22K1-1032	99176			MP109	
001-153	99176	2-6		22K1-420	99176			MP105	
001-154	99176	2-5		230	99176	2-5		MP154	
001-154	99176	2-6		230	99176	2-6		MP157.20	
001-156	99176	2-3		342012	75915	2-8		PS1XF1	
001-164	99176			433212	99176	2-1		MP72	
001-180	99176			6	63515	2-5		MP152	
001-183	99176			6	63515	2-6		MP157.15	
001-184	99176			9706-3	99176			W 3 P 2	
001-186	99176							MP103	
001-187	99176							MP112	
001-190	99176							MP106	
001-192	99176							MP117	
001-193	99176							MP118	
001-199	99176	2-2						MP 2 2	

**SECTION V INDEX-REFERENCE DESIGNATION
CROSS REFERENCE TO PAGE NUMBER**

REFERENCE DESIGNATION	PAGE NUMBER	REFERENCE DESIGNATION	PAGE NUMBER	REFERENCE DESIGNATION	PAGE NUMBER
A18	2-6	MP91.5	2-2	MP121	2-3
BT1	2-5	MP92	2-2	MP122	2-3
B6	2-4	MP93	2-2	MP124	2-3
MP2.5	2-1	MP94	2-2	MP125	2-3
MP3	2-1	MP95	2-2	MP126	2-3
MP4	2-1	MP96	2-2	MP127	2-3
MP5	2-1	MP97	2-2	MP128	2-3
MP6	2-1	MP98	2-2	MP129	2-3
MP19	2-1	MP99	2-2	MP130	2-3
MP22	2-1	MP100	2-2	MP131	2-3
MP27.1	2-1	MP101	2-2	MP132	2-3
MP31	2-1	MP102	2-2	MP133	2-3
MP70	3-1	MP103	2-2	MP134	2-3
MP71	2-1	MP104	2-2	MP135	2-3
MP72	2-1	MP105	2-2	MP138	2-3
MP73	2-1	MP106	2-2	MP137	2-3
MP74	2-1	MP106.1	2-2	MP138	2-3
MP75	2-1	MP107	2-2	MP139	2-3
MP76	2-1	MP107.1	2-2	MP140	24
MP77	2-1	MP108	2-2	MP141	2-4
MP78	2-1	MP109	2-2	MP142	2-4
MP80	2-1	MP110	2-2	MP143	2-4
MP81	2-1	MP111	2-2	MP144	2-4
MP82	2-1	MP112	2-3	MP145	2-4
MP83	2-1	MP113	2-3	MP146	2-4
MP84	2-1	MP114	2-3	MP147	2-4
MP85	2-1	MP115	2-3	MP148	2-4
MP86	2-1	MP116	2-3	MP149	2-4
MP87	2-1	MP117	2-3	MP150	2-4
MP88	2-2	MP118	2-3	MP151	2-4
MP89	2-2	MP119	2-3	MP152	2-4
MP90	2-2	MP120	2-3	MP153	2-4
MP91	2-2				

**SECTION V INDEX-REFERENCE DESIGNATION
CROSS REFERENCE TO PAGE NUMBER (CONTINUED)**

REFERENCE DESIGNATION	PAGE NUMBER	REFERENCE DESIGNATION	PAGE NUMBER	REFERENCE DESIGNATION	PAGE NUMBER
MP154	2-4	PS1F1	2-6	XV2	2-5
MP155	2-4	PS1J1	2-6		
MP156	2-4	PS1MP171	2-6		
MP156.1	2-4	PS1MP183	2-6		
MP156.2	2-4	PS1MP184	2-6		
MP157	2-4	PS1MP185	2-6		
MP157.1	2-4	PS1MP186	2-6		
MP157.2	2-4	PS1S1	2-6		
MP157.3	2-4	PS1XF1	2-6		
MP157.4	2-5	V1	2-4		
MP157.5	2-5	V2	2-5		
MP157.8	2-5	W1	2-4		
MP157.9	2-5	W1CF1	2-4		
MP157.10	2-5	W1P1	2-4		
MP157.11	2-5	W 2	2-5		
MP157.12	2-5	W2CP1	2-5		
MP157.13	2-5	W 2 P 2	2-5		
MP157.14	2-5	W3	2-6		
MP157.15	2-5	W3CP2	2-6		
MP157.19	2-5	W 3 P 2	2-6		
MP157.20	2-5	W3P3	2-6		
MP158	2-5	W3W2	2-6		
MP159	2-5	W3W3	2-6		
MP159.1	2-5	W 4	2-6		
MP159.2	2-5	W4CP3	2-6		
MP160	2-5	W 4 P 4	2-6		
MP161	2-5	W 4 W 5	2-6		
MP162	2-5	W 6	2-6		
MP163	2-5	W6CP3	2-6		
MP164	2-5	W6P4	2-6		
MP165	2-5	W6P5	2-6		
MP187	2-6	W 6 W 7	2-6		
PSI	2-6	X V 1	2-4		

END

01-03-83

DATE



END

01-03-83

DATE



By Order of the Secretary of the Army:

BRUCE PALMER, JR.
GENERAL, U.S. ARMY
ACTING CHIEF OF STAFF

Official:

VERNE L. BOWERS

Major General, United States Army
The Adjutant General

Distribution:

Active Army:

USASA (2)	GenDep(2)
CNGB (1)	Sig Sec. Gen Dep (5)
ACSC-E (2)	Sig Dep (10)
DOT(1)	A T S (1)
COE(1)	MAAG (1)
TSG(1)	USAPA(5)
DCSLOGil)	WRAMC(1)
USAARENBD (2)	U S A I M S
UStiMB (10)	USAERDAW(5)
USACDC (2)	USAERDAA(2)
USACDC Agcy (1)	USACRREL(2)
USACDCEC (10)	AV Comm Cent (1)
A M C (1)	Sig FLDMS(2)
M I C O M (4)	Units org under fol TOE: -1 ea.
USASTRATCOM (4)	1-101
T E C O M (2)	5-101
USAESC (70)	5-111
CONARC (5)	5-201
ARADCOM (2)	8-111
ARADCOM Rgn (2)	9-47
OS Mai Comd (4)	9-87
LOGCOMD (5)	11-95
M D W (1)	11-96
A r m i e s (2)	11-117
Corps (2)	11-158
1st Cav Div (3)	11-500(AA-AC)
Instl(21 except	17-95
FtCarson(19~	19-97
Ft Gordon (10)	17-98
Ft Huachuca (10)	19-237
WSMR (3)	19-256
Svc Colleges (2)	19-500(AA-AE),
USASESS (5)	29-134
USAINTS (5)	29-136
USAIS (2)	30-17
USAES (2)	JO-18
USAAD(2)	30-25
USAFAS (2)	30-28
USAARMS (2)	30-500(AA-AN)
Army Dep (2) except	47
SAAD (30)	54-12
LEAD (14)	54-22
TOAD (14)	54-302
ATAD (10)	54-312
LEAD (7)	54-402
NAAD (5)	67
SVAD (5)	

ARNG & USAR: None

For explanation of abbreviations used, see AR 310-SD